



- HOME
- STRETCHER
- GOODS
- HYDRAULIC
- PASSENGER
- ESCALATOR
- & PARTS

☎ **9099178681/9099178682**

📍 65 - Viswakarma Estate, Nr. Khodal Dham Soc.,  
Kathwada-Singarva Road, Kathwada G.I.D.C,  
Ahmedabad-382430. (GUJARAT)

✉ [www.ovionindustries.com](http://www.ovionindustries.com)

✉ [info@ovionindustries.com](mailto:info@ovionindustries.com)  
[ovionindustries@gmail.com](mailto:ovionindustries@gmail.com)

**GST. NO. : 24AAGF07991Q1ZB**

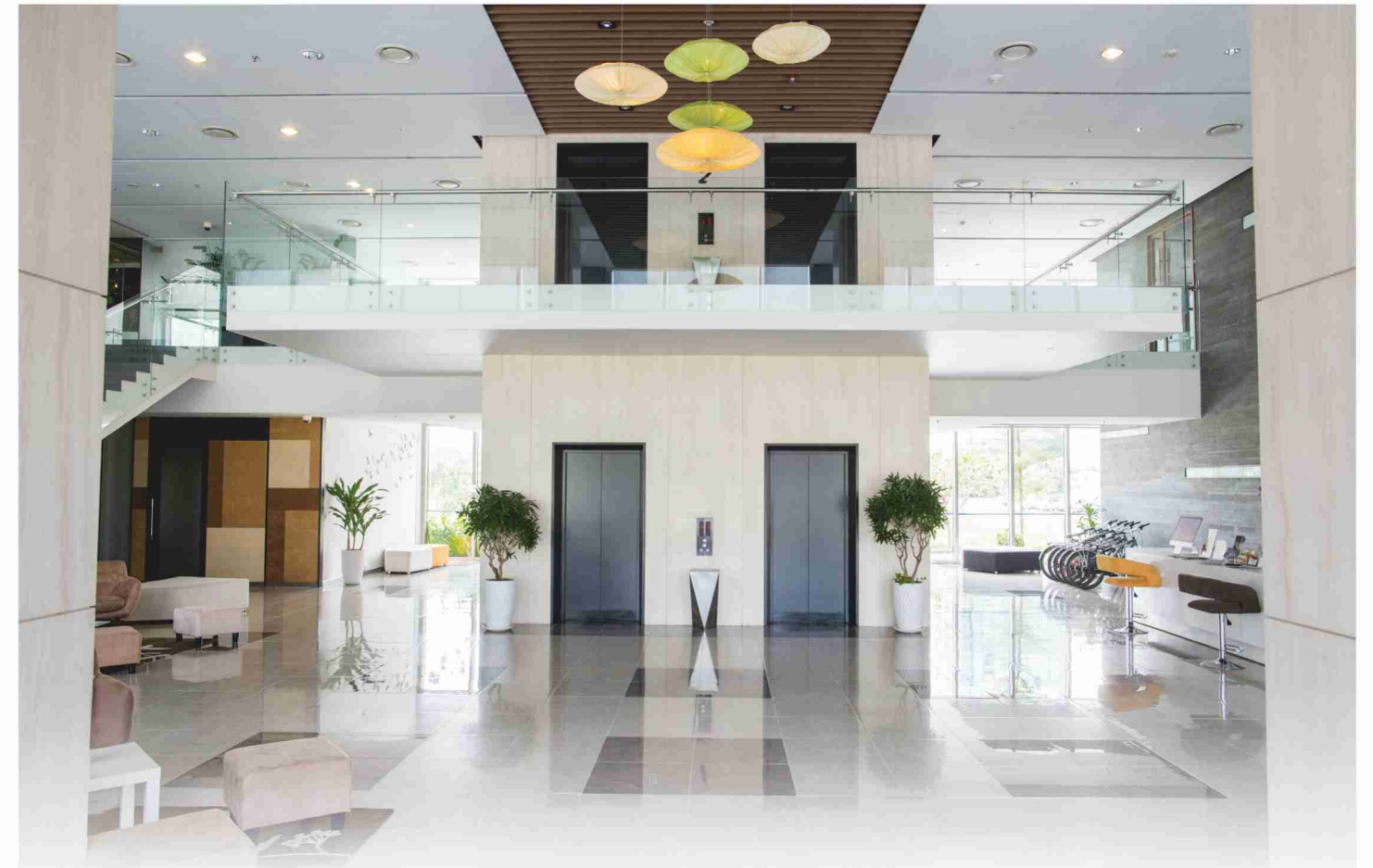


*Safe &  
Reliable Technology*

## About Us

Established in the year **January 2018**, we “**Ovion Industries**” are actively engaged in manufacturing, wholesaling and an extensive range of Passenger Elevator, Goods Elevator, Elevator Traction Machine and Elevator Door. These products are highly demanded their features like robust construction, hassle-free functionality high performance, less maintenance, optimum efficiency, easy to operate and reliable. We are supported by a dedicated team of professionals, who always make their best effort towards the success of the firm. These products are manufactured using ultra-modern techniques and best quality raw material in accordance with international quality norms. Our skilled team of professionals also works in close coordination with each another in order to deliver the best quality products to our respected clients. Furthermore, we also provide Elevator AMC Services and Elevator Repairing Services.

We are backed by the sophisticated infrastructural facility for manufacturing our offered range of products. We have divided our infrastructure into various parts such as production, manufacturing, procurement, quality control, sales & marketing, etc. Installed with modern machines and equipment, all these divided parts are operated by our skilled team of professionals, who are hired keeping in mind their knowledge and dedication in the domain. Furthermore, the offered products are available in different specifications as per the different needs of...



## OUR PRESTIGIOUS

- ▶ 100% Customized
- ▶ GST Benefits
- ▶ New Lift within 15 days
- ▶ Advanced Gain Technology
- ▶ 1050+ Happy Customers
- ▶ SMS Notification Alert
- ▶ Child Safety
- ▶ Service Tracking Mobile App
- ▶ 24/7 Emergency Service
- ▶ Ovion Maintenance Care
- ▶ Ride Comfort Coin Challenge





WHY



**DESIGN**

R & D  
In House dye Shop  
International Standards



**MAINTENANCE**

24X7  
Easily replaceable parts  
App.based monitoring



**SAFETY**



**CUSTOMER FLEXIBILITY**

Fastest Delivery in segment  
personal your cabin  
experience with 300+  
variations in

- ▶ Ceiling
- ▶ Flooring
- ▶ Operating Panel
- ▶ Door
- ▶ Color



**AFFORDABLE PRICE**

**SAFETY FEATURES**

- ▶ Automatic Rescue Device (ARD)
- ▶ Double safety Locks for all Doors
- ▶ Safety Rope for Over Speed Governor
- ▶ Full length infra Red Screen Sensor for Doors
- ▶ Safety Gear Unit for Car
- ▶ Sensor Type Final Limit Switches
- ▶ Shock Proof Anti-Skid PVC Vinyl Flooring
- ▶ Buffer Spring Suspension for Car & Counter Weight Frame
- ▶ Emergency Stop Switches for Pit & Car Top
- ▶ Wall Mounted Safety Ladder for Pit Access
- ▶ Fire Restricted Zig Zag Foldable Doors
- ▶ Fire Alarm Switch
- ▶ Advanced Child Safety

**COMMERCIAL ELEVATOR**

- ▶ Mild Music
- ▶ Double Dot Matrix Position Indicator
- ▶ Floor Annunciator
- ▶ Overload Device
- ▶ Mirror For Rear Panels
- ▶ High Speed Fan
- ▶ Gentle Supporting Hand Rail

**Safety & Features**

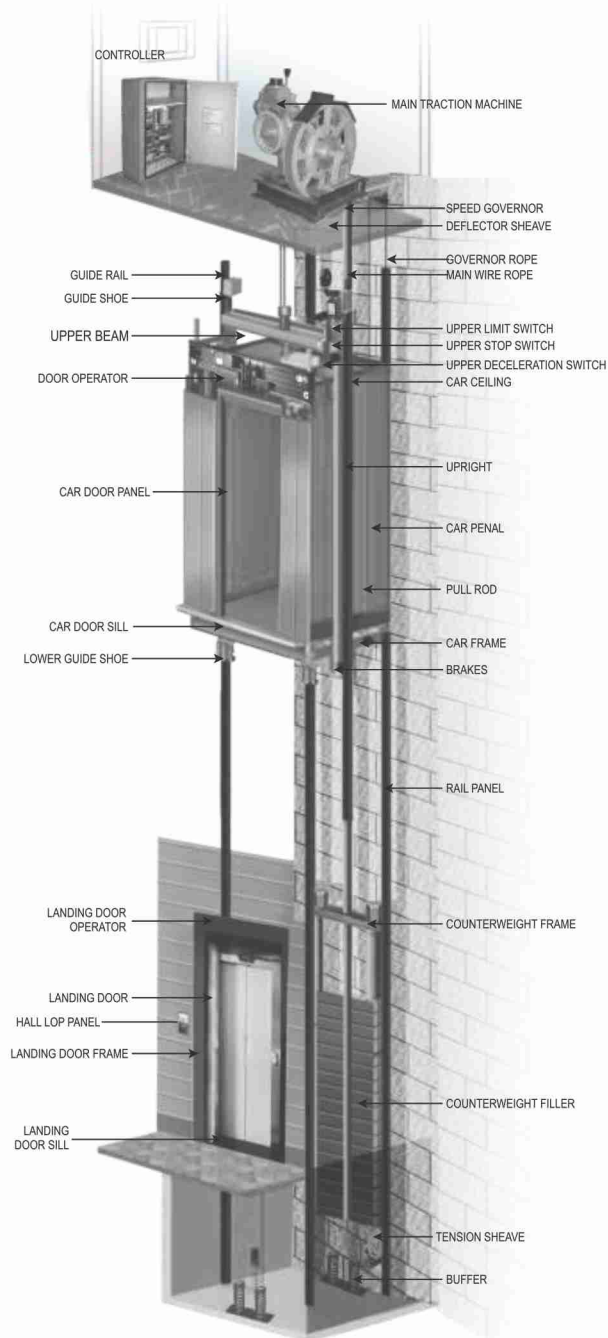


**RESIDENTIAL**

- ▶ Mild Music
- ▶ Gentle Supporting Hand Rail
- ▶ Double Dot Matrix Position Indicator
- ▶ Floor Annunciator
- ▶ Mirror For Rear Panels
- ▶ High Speed Fan



- ▶ PASSENGER ELEVATORS
- ▶ PANORAMIC ELEVATORS
- ▶ HOSPITAL ELEVATORS
- ▶ HOME ELEVATORS
- ▶ GOODS ELEVATORS
- ▶ HYDRAULIC ELEVATORS
- ▶ MRL ELEVATORS
- ▶ DUMB WAITER
- ▶ ESCALATER



## ▶ HOME ELEVATOR

Home Lift is the elevator designed to meet vertical mobility needs in public and private building. It is the ideal solution for elderly and impaired mobility person who can finally move autonomously and free from stairs.

It is a modern product, designed and manufactured to meet a wide range of needs from the garage to the roof, you can move effortlessly up to 4 floors.



## ▶ TRACTION & MRL ELEVATOR

Brings you a revolutionary concept in the field of elevators to give you absolute freedom in designing - MRL - Machine Room Less Elevators! Our exclusive Machine room less elevators brings aesthetic enhancements for you structure.

- ▶ ORDER TO ERECTION IN 15 DAY'S
- ▶ LOW CONSTRUCTION OR DEMOLITION FLEXIBILITY
- ▶ NO MACHINE ROOM NEEDED
- ▶ MULTIPLE SAFETY FEATURES
- ▶ 24X7 MAINTENANCE ASSISTANCE
- ▶ NOISELESS JERK LESS FUNCTION WOODEN FINISH / MARBLE / GLASS OPTIONS AVAILABLE
- ▶ OVER 250+ CABIN PERSONALIZATION OPTIONS





## OVION 01

**INTERNAL WALL LAYOUT**  
Layout 01  
Material : SS Hair Line

**FLOORING**  
PATTERN 01  
MATERIAL : PVC Material

**CEILING**  
DESIGN 02  
MATERIAL : MS Powder Coted



## OVION 02

**INTERNAL WALL LAYOUT**  
Layout 02  
Material : SS Hair Line

**FLOORING**  
PATTERN 02  
MATERIAL : PVC Material

**CEILING**  
DESIGN 02  
MATERIAL : MS Powder Coted



## OVION 03

**INTERNAL WALL LAYOUT**  
Layout 03  
Material : MS Powder Coated  
Wooden Finish & Mirror

**FLOORING**  
PATTERN 03  
MATERIAL : Marble Finish

**CEILING**  
DESIGN 03  
MATERIAL : MS Powder Coated



## OVION 04

**INTERNAL WALL LAYOUT**  
Layout 04  
Material : MS Powder Coated  
Wooden Finish & Mirror

**FLOORING**  
PATTERN 04  
MATERIAL : Grass Carpet

**CEILING**  
DESIGN 04  
MATERIAL : MS Powder Coated



## DOOR



01 SS AUTO DOOR



02 SWING DOOR



03 GLASS DOOR



04 SMALL VISION  
AUTO DOOR



05 COLLIPSBLE DOOR



06 IFG DOOR

AVAILABLE IN DECORATIVE SS DESIGNER SHEET & POWDER COATING SHEETS AS WELL  
AVAILABLE RANGE 600 TO 2000 CLEAR OPENING



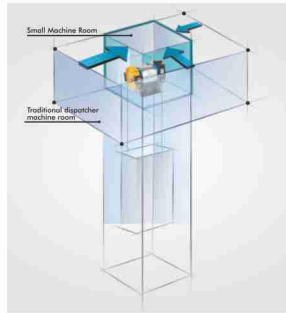
## MRL ELEVATOR

Brings you revolutionary concept in the field of elevators to give you absolute freedom in designing- MRL - Machine Room Less Elevators! Our exclusive Machine room less elevators brings aesthetic enhancements for you structure.

Ovion was one of the first companies in India to launch the Gearless technology. A project very dear to our chairman, we have expanded our MRL machines range upto 5 tons. We use state of the art precision equipment to manufacture and test this product. Though the PMSM Technology is just making its mark in the mass elevator market, techno has been using this technology since a decade and has successfully implemented this across other products such as motors and solar pumps as we'll.

### ADVANTAGES

- LATEST TECHNOLOGY IN THE WORLD
- SMOOTHEST TRAVEL
- ABSOLUTE FREEDOM IN BUILDING DESIGNS
- SUBSTANTIAL SAVING ON ELECTRICITY COST
- SAVE THE CONSTRUCTION COST
- MORE SAFE



## MRL MACHINE



PASSENGER CAPACITY **04-30**

LOAD CAPACITY UP TO **15** TONNES

### RANGE OF MRL

SPEED  
2.5 MPS

ROPE DIA  
8MM

ROPING  
2:1

SHEAVE DIA  
320 MM



GREEN ENVIRONMENTAL PROTECTION



SPACE SAVING



EFFECTIVE AND ENERGY-SAVING



LOW NOISE

SPECIAL FEATURES 44 & 66 POLES MOTORS AVAILABLE

## CAPSULE ELEVATOR

### ▶ WHAT IS CAPSULE ELEVATOR, HOW TO CHOOSE A CAPSULE ELEVATOR

Capsule Elevator is essentially installed at a place where elevation of building is to be enhanced with display of moving lift and passenger is provided with panoramic view of surroundings. Capsule elevator normally comes in 5 and 3 Glass panel.

Capsule Elevator is normally preferred in shopping malls (to give view of item displayed), 5 star hotels (to provide lobby view) and high rise residential buildings.



PASSENGER CAPACITY **04-30**



- ▶ Made from S.S/M.S. with vision panel.
- ▶ Color-Powder coated, Elegant looks, Light in weight and variable speed.
- ▶ Controller Full Proof to voltage (PLC or sold state) with full collective- selective system.
- ▶ AC VVVF drive for ierk free operation & for variable speed.
- ▶ Overload indication and Auto Door announcing system.
- ▶ Avail Inverter facility for single base at time of Power failure.
- ▶ Push Button Luminous type highly attractive as well as durable. Facility Floor Position at the floors as well as in cabin.





## HYDRAULIC ELEVATOR SYSTEM



Compared with traction lift, hydraulic has the following obvious advantages.

### Flexible setting of the machine room position

Top machine room is not needed. A machine room can be flexibly set within 10 meters ranges near the shaft which more complies with the individual design requirements of the construction.

### Wide loading range, strong adaptability

Large car and tonnage design, maximum carrying ability reaches to 2 tons.

### Saving space and energy consumption, reducing the cost

Counterweight device is not needed, which increase the utilization rate of the hoistway and greatly saves the construction space and costs.

Meanwhile, when the lift is going downwards, depending upon the work done by the cabin's own weight, no electricity is consumed.

### The highest safety and reliability.

Apart from all the safety, protection devices of the traction lifts, we additionally add the multiple hydraulic circuit protection system such as safety valve, limited speed disconnecting valve etc.

The products are of the compact structure, low fault rate, easy for the daily maintenance.



## GOODS ELEVATOR

LOAD CAPACITY **500 to 15000** kgs.

Ovion has been successful in implementing its technical expertise to install over 1200 heavy goods elevators as per customer requirement. We have completed prestigious customized jobs in record time, including installation of 16 MT elevator, 4 meter opening auto door and other Non-Standard elevator requirements. We are able to exceed safety standard and provide an all-round solution due to our in house design team and world renowned software digipara.



### SPECIAL FEATURE

- SOLUTIONS AVAILABLE IN MRL, GEARED AND HYDRAULIC
- DUST AND WATER PROOF OPTIONS AVAILABLE
- AUTO LEVELING FOR SMOOTH MOVEMENT
- REMOTE CONTROL DOOR OPERATIONS
- DOOR OPENING UPTO 4 METERS
- AC
- FIRE PROOF / SAND PROOF / BIRD PROOF
- RANGE FROM -500 TO 15 MT
- CUSTOMIZED CABIN





## ELEVATOR COP-LOP PANEL



CAR OPERATING PANEL &  
LANDING OPERATING PANEL  
BUTTON OPTION

No.	Model Name	Type	Dimension Availability	Display Availability
01	DCB	COP	850x170x14mm	DOT matrix, 7 Segment
02	DLB	LOP	285x70x12mm	DOT matrix, 7 Segment

## ELEVATOR SAFETY & SPARES

SAFETY SET



RAIL FITTINGS



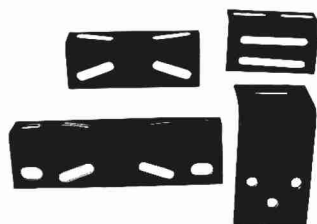
THIMBLES



DIVERTERS



BRACKETS



OSG SETS



## ELEVATOR CONTROL PANEL



### FEATURES

Programmable  
G+35 Down Collective Or  
G+35 Collective Selective  
Speed : Up To 4 M/sec  
Operation : Regular V3f  
Auto Door



### FEATURES

Programmable  
G+ 35 Down Collective Or  
G+ 35 Collective Selective  
Expandable Up to 16 Floor  
Duplex Group Control  
Available For 1 & 3 Phase  
Speed : Up To 4 M/sec



### FEATURES

In case of a main power supply failure, the lift stopped between two floors is moved to floor level, the automatic door is opened and passengers are our safely, For lifts with automatic door, in case of a main power supply failure at floor level, the door is remain opened.



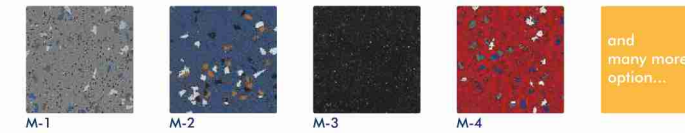
# ESCALATOR



1. Lack of phase, error phase protection	If lack of phase or error phase has been checked our, the escalator (Moving-walkway) will automatically stop the operation.
2. Motor over-load protection	When the current exceed 15% of the current rating, the escalator will automatically stop the operation.
3. Electrical Appliance loop protection	If offers the automatic circuit discounting device to protect the circuit and mains components of the escalator (moving-walkway).
4. Handrail inlet protection	When some foreign substance has been clipped in the handrail inlet, the escalator (moving-walkway) will automatically stop the operation.
5. Handrail inlet protection	When some foreign substance has been clipped in or between the combs, the escalator (moving-walkway) will automatically stop the operation.
6. Step sagging protection device	When there is abnormal step bending, the escalator (moving-walkway) will stop the operation before the step entering into the comp plate.
7. Broken drive-chain safety device	When the drive-chain has been over-stretched or it is broken, the escalator (moving-walkway) will automatically stop the operation.
8. Broken step-chain protection	When the step (plate) chain has been over-stretched or its broken, the escalator (moving-walkway) will automatically stop the operation.
9. Overspeed protection	When the step (plate) chain has been over-stretched or its broken, the escalator (moving-walkway) will automatically stop the operation.
10. Direction reversal protection	When it comes to the unintentional reversal of the direction of travel, the escalator (moving-walkway) will automatically stop the operation.
11. Security Line	The Yellow synthetic resin security line is located in the front position and two sides of the escalator tread so that the passenger will not tread in-between the edge of the adjacent step and the lift group lengthened skirt panel. The security line on both sides of the step is higher than the thread surface. (The moving-walk offers the selective yellow spray-painted security line).
12. Emergency stop button	When the button has been pressed down, the escalator (moving-walkway) will stop the operation.
13. Skirt Panel protection	When some foreign substance has been clipped in between the skirt panel and the step, the escalator (moving-walk) will automatically stop the operation.
14. Brake protection	When the electric force falls short supply or it acts any of the safety devices, the brake function goes into effect by the safety device through the spring resilience. In this way, the escalator (moving-walk) stop the operation.
15. Safety Inspection Switch	It is a safety device to prevent from the escalator starting during the inspection and maintenance.
16. Step Illumination	Illumination exists in the upper and lower ends of the escalator, in the lower part of the step in order to remind the passengers of the security matters.
17. Alarm bell starting device	The alarm bell rings when it start the escalator in order to remind the passenger of the security matters.
18. Control device for handrail breakage	When the handrail is broken, the escalator will automatically stop the operation.
19. Skirt Panel brush	The brush that has been installed between the skirt panel and the step will prevent the passenger from touching the skirt panel. (It is not merely restricted to the escalator)
20. VVVF Inverter control technology	Selected the variable frequency can effectively reduce energy consumption.
21. Comb Lighting	Lighting is installed on the apron near the comb plate next to the board, to provide illumination to facilitate the safety of passengers ride the escalator step and combs.
22. Handrail Lighting	Handrail lighting installed in the armrest bracket, the soft light running escalator add several Reiki.
23. Automatic start / stop	In the floor plate near infrared sensor can detect passenger to enter the floor plate and starts running automatically when passenger left will automatically stop running. In order to save energy.

# DESIGNER SHEET & POWDER COATING

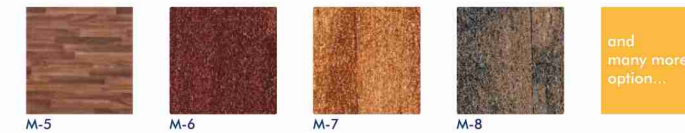
## PVC MATERIALS



## PVC MARBLE FINISH MATERIALS



## PVC WOODEN MATERIALS



## PVC CARPET FINISH MATERIALS



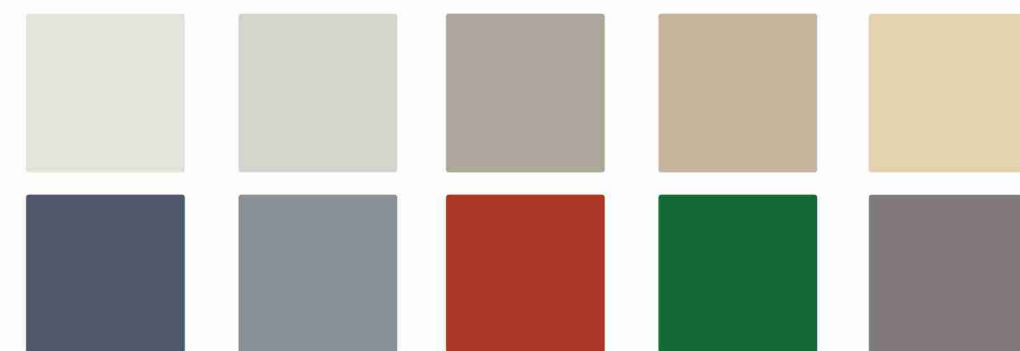
## FLOORING PATTERN AVAILABLE IN MARBLE & PVC



## CEILING



## POWDER COATING



AND MANY MORE...



## SAFETY FEATURES

### AUTO RESCUE DEVICE

It should be In case of a main power supply failure, the lift stopped between two floors is moved to nearest floor in the down ward direction, the automatic door is opened and passengers out safely”

### INFRARED LIGHT CURTAIN

Full height infra red curtain with multiple cross-crossing light beams detect the smallest obstruction in door path and stop doors from closing.

### OVER LOAD SENSOR WITH AUDIO VISUAL INDICATION

On overloading of the lift, car audio-visual indication is provided and doors are kept open till excess load is removed.

### CAR EMERGENCY LIGHT & FAN

The emergency light is always illuminated in normal condition and switches itself automatically to battery back up in case of power failure as shown in picture. (Block-D) Fan also operates for minimum 20 minutes after power failure.

### EMERGENCY ALARM & ‘PUSH TO TALK’

In case of any emergency or power failure, help can be obtained by alarming or by communicating at lobby through this system which is battery operated and self charging as shown in picture. (Block-E)

### SAFETY IN CASE OF OVER TRAVEL

Three phase electric power is disconnected from control and moment elevator car moves beyond the limit of top and bottom terminal floors causing immediate application of the brake to bring the elevator to halt.

### SAFETY IN CASE OF ROPE BREAKAGE

In the elevator of breakage of ropes, elevator speed exceeds the rated speed in the downward direction due to gravitational acceleration. the over speed governor activates the clutch mechanism thereby switching off elevator to halt.

### CAR FAN AUTOMATIC SLEEP

Car fan automatically stops when there are no registered floor calls resulting in power and enhancing its life.

### VOICE ANNUNCIATOR WITH MUSIC

This system provides detailed information to passengers related to next floor, direction of movement, door opening /closing, scheduled operations and other information depending on building needs. This system features natural electronic voice synthesizers.



**SUPPLY  
TO ALL  
INDIA**